

Educational Presentations



Please contact Windhover Center for the Arts if you are interested in bringing your class to see this exceptional exhibit. Dr. Treffert is available to speak with your class and present additional audio-visual material.

This would be a great educational opportunity!

Funding is available for busing needs!

Call: 920.921.5410

Additional Websites:

www.savantsyndrome.com

www.wisconsinmedicalsociety.org

www.daroldtreffert.com

www.vsawis.org

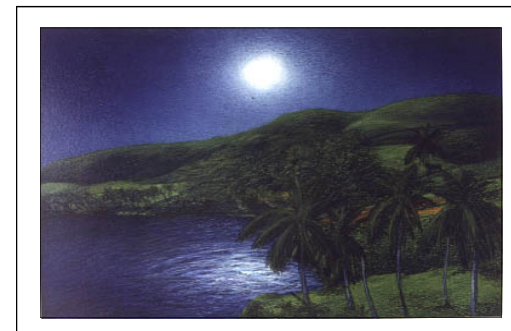
Mark This Date On Your Calendar!

Stable by Ping Lian Yeak



***“Why does he draw and produce?
It is his life.
It is his spirit!”***

~ Takashi Kawasaki on savant artist,
Yoshihiko Yamamoto: “Another
Van Gogh of Japan”

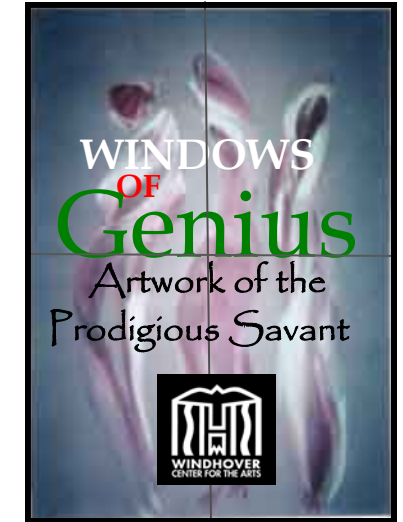


Moonlit Night by Richard Wawro



Pont des Investitures by Gilles Trehin

51 Shaboyan Street
FDL, WI 54935



September 7 to October 12, 2007

**Gallery Opening, Reception & Lecture
September 7, 2007 6 to 8:30 p.m.**

**An Extraordinary, Unique Exhibit
&
An Exceptional Educational Event**

Sponsored in part by



Wisconsin Medical Society
Foundation

Fond du Lac Area Foundation

... one generation to the next ...

NON PROFIT ORG.
U.S. POSTAGE
PAID
PERMIT NO. 535
FOND DU LAC, WI

WINDOWS OF Genius

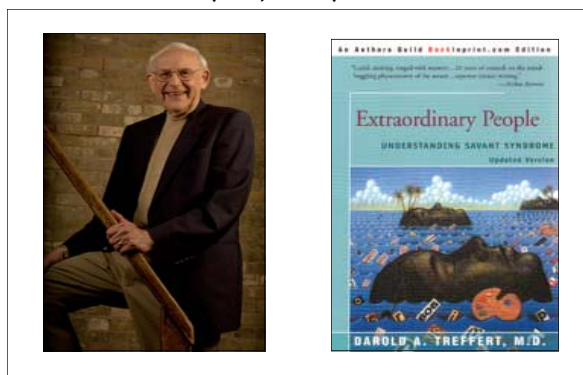
An International Exhibit



Savant syndrome is a remarkable condition in which persons with autism or other developmental disabilities have some extraordinary “islands of genius” (presented here as “windows”) that stand in marked, jarring contrast to overall handicap. Savant abilities range in a spectrum from ‘splinter skills’ to prodigious. The latter is a high threshold term reserved for those savants whose abilities would be spectacular, and labeled ‘genius’, if seen in a non-disabled person.

There are fewer than 100 prodigious savants living world-wide. Some of those prodigious savants are artists and this exhibit, largely from Dr. Treffert’s personal collection, provides a very rare, first of its kind, opportunity to see paintings, drawings, sculpture and other art forms of various prodigious savants displayed in a single show. Coupled with the art pieces themselves will be summaries of the background of these extraordinary artists, providing an educational glimpse into the mind, as well as the world, of the prodigious savant. Since savant syndrome is better seen than described, segments of video documentaries on these special people will be used to further illustrate their remarkable skills and abilities.

Dr. Treffert has been studying savant syndrome for over 45 years, ever since he met his first savant in 1962 on the Children’s Unit he was developing at a hospital in Wisconsin. Through the years he has collected the art works of these exceptional people, and this exhibit is a display of the work of prodigious savants from a number of different countries. It focuses on the ability of these specially gifted persons, rather than on their disability and provides a very optimistic glimpse into the skills, the mind and the world of these exceptional people who Dr. Treffert has gotten to know quite well and counts, now, as his friends. On the 45+ year journey with savants, Dr. Treffert



states he has learned as much about matters of the heart, from these remarkable people and their equally remarkable families, as he has about circuits in the brain.

Dr. Treffert is on the staff of the Behavioral Health Department of St. Agnes Hospital in Fond du Lac, Wisconsin and is Clinical Professor in the Department of Psychiatry of University of Wisconsin Medical School in Madison, Wisconsin. He is author of *Extraordinary People: Understanding Savant Syndrome* and maintains an internationally popular and respected web site www.savantsyndrome.com. In addition to this spectacular artwork itself, the exhibit explores the intriguing possibilities that savant syndrome suggests regarding the hidden potential, a little “Rain Man” perhaps in all of us.



Feeding Time by Alonzo Clemons

Featuring Internationally Known Savants

Gregory Blackstock, Alonzo Clemons, Temple Grandin, Jonathan Lerman, Catherine Mouet, Christophe Pillault, Gilles Trehin, Richard Wawro, George Widener, Stephen Wiltshire, Ping Lian Yeak and others.



NYC by Stephen Wiltshire

We are proud to have Agnesian HealthCare, the Wisconsin Medical Society Foundation, and the Fond du Lac Area Foundation sponsoring this exhibit. Their dedication to health care and the healing of the whole person is a gift to our community.

Thank you!



Christophe Pillault

Exhibit Promotional Organizations

Agnesian HealthCare

Wisconsin Medical Society

VSA arts of Wisconsin